

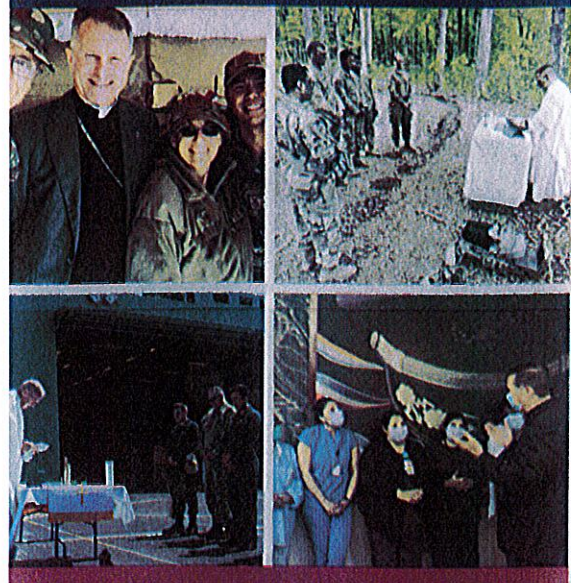
The role of the military chaplain is to accompany and support [service members] in their journey, being for all of them a consoling and fraternal presence" - Pope Francis



ARCHDIOCESE FOR THE MILITARY SERVICES, USA
Post Office Box 96168, Washington, DC 20077-7168
Telephone: (202) 719-3622 • www.milarch.org



"I've been many months, probably over a year or more if you count it up, where I didn't have [access to] a Catholic Chaplain."



The above quote are the words of LTC Paul Belmont, III, USA, a soldier who has completed two tours of duty in Afghanistan and another in Iraq. He, and many other Catholics service members, know all too well the difficulty that can be found in trying to fully practice one's faith while deployed.

Currently, 25% of the Military is Catholic, but Catholic priests make up only 6% of the chaplain corps, leaving Catholic chaplains stretched thin over a globally dispersed faith community on a scale of one priest per seventeen-hundred service members, not counting their families.

The Archdiocese does what it can to meet the needs of her faithful, such as training lay leaders to conduct Sunday Celebrations when a priest is unavailable, and educating catechists so that military members and their families can continue growing in their faith. However, as Colonel Belmont notes "I have sat in tents on Sundays and gathered small and large groups of Catholics together and sung songs and read scripture, but it's not the same--- it is not a replacement for true Communion with our God."

The AMS faces many challenges in her mission to "serve those who serve." The Archdiocese receives no funding from the United States government, and unlike a conventional diocese, the AMS has no parishes from which to draw financial resources. This also means the AMS must step in to provide services normally handled at the parish level. The AMS is, in a sense, a parish that stretches across the world.

Despite these difficulties, the AMS is here to ensure that of all the sacrifices our service member and their families must make, their faith and access to the sacraments should not be one of them. If possible, I ask you to consider making a gift to the AMS today so we can continue, as Colonel Belmont says, to be "my family's lifeline to God and the Eucharist."


Your gift, however big or small, will greatly impact service member's faith and pastoral care.


Remembering and keeping our service members and their families in my prayers, I remain


Sincerely in Christ,
Timothy P. Broglio


(The Most Reverend) Timothy P. Broglio, J.C.D.
Archbishop for the Military Services, USA


AMS by the Numbers


 **Over 59,000**
Registered Families

 **Over 220**
Military Installations Served

 **392**
AMS Priests Serving

 **Serving 153**
Veterans Affairs Medical Centers

 **Forming 34**
Co-Sponsored Seminarrians

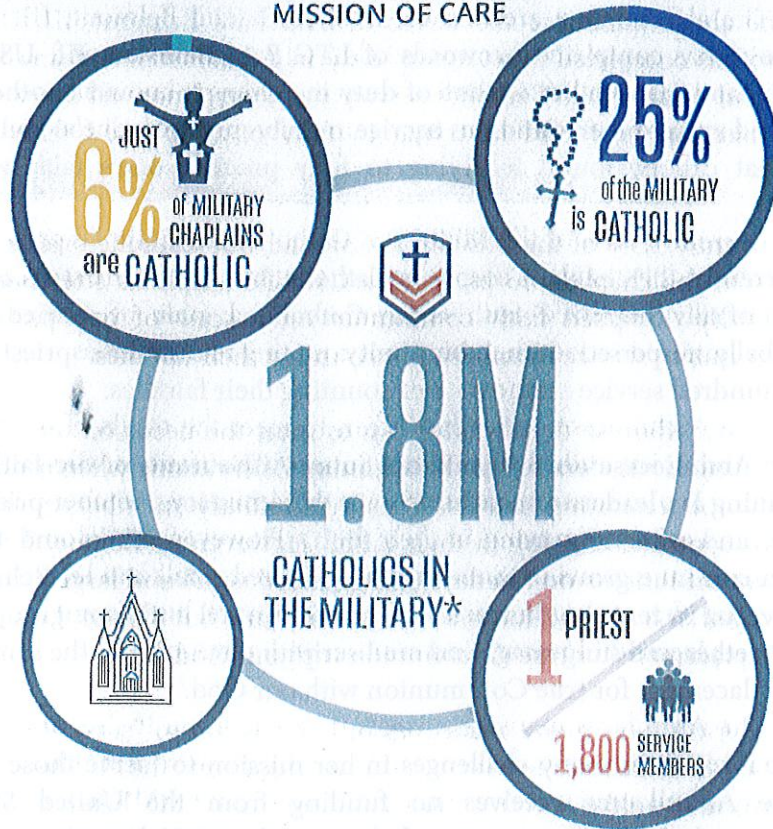
 **Over 15,000**
Religious Education Students

ARCHDIOCESE FOR THE MILITARY SERVICES, USA

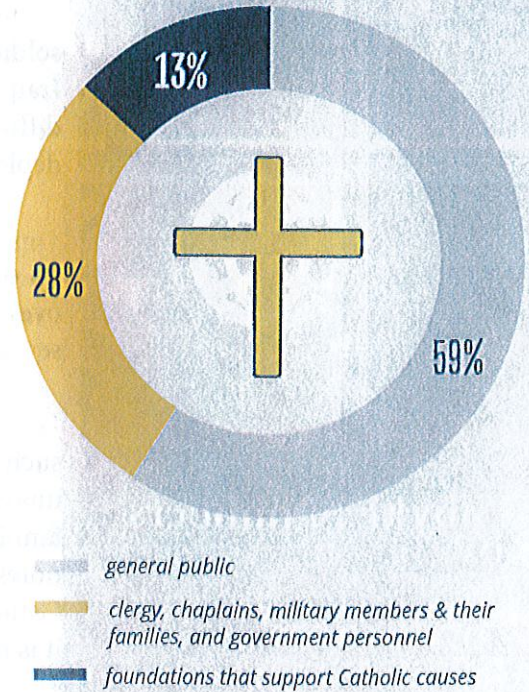


BY THE NUMBERS

MISSION OF CARE



FUNDING



392 CHAPLAINS
Serving 220 U.S. military installations in 29 countries

ROLE WORLDWIDE

Serves civilians working for the Federal Government

in **134** COUNTRIES**

STORES OVER

4 MILLION SACRAMENTAL RECORDS
and receives over 10,000 requests for copies of records each year

1 ARCHBISHOP
and **4** AUXILIARY BISHOPS to cover the territory

Each BISHOP spends more than **65%** of their time TRAVELING for their Pastoral duties

*Including family members

**Currently, due to limited resources, the AMS cannot adequately serve this population

The AMS is charged with the pastoral care of approximately 1.8 million Catholics worldwide, including U.S. Soldiers, Sailors, Marines, Airmen, Coast Guardsmen, hospitalized veterans, civilians at the service of the federal government beyond U.S. borders, and their families.

Role Description for Primary Point of Contact

Each pastor will be asked to submit 1 person to serve as the Primary Point of Contact (PPOC) for the Disciple Maker Index (DMI). Collaborating with the Pastor, the Primary Point of Contact will serve as the main conduit of information and coordination of logistics for the administration of the DMI survey to their parish community.

The Primary Point of Contact has four key responsibilities:

1. To receive information and details related to the Disciple Maker Index including instructions, schedules, and communication to be shared.
2. To share relevant information with the pastor, parish staff, parish leadership (e.g. councils, key ministries) about the Disciple Maker Index. This includes key dates and deadlines as well as publicizing the Disciple Maker Index.
3. To provide requested information to your diocese with respect to parish facts.
4. To enter into the DMI portal basic parish information and the names and contact information of others who will be working with the DMI data after the survey.

We expect the time commitment for the PPOC to be modest, at most 2 to 4 hours per month leading up to the survey's administration and 1 to 2 hours per week during the weeks when the survey is open.

When considering the Primary Point of Contact, pastors should consult the following criteria:

- A trusted staff member or volunteer, can be another priest or a deacon assigned to the parish
- Organized and able to navigate and communicate well within the larger parish community
- Comfortable with technology (navigating online forms and platforms)

The PPOC will attend an orientation webinar to help them understand their role and the schedule of activities for administering the Disciple Maker Index.